

Hebel

for future living

Make your dream home a **Hebelhome**



BE SURE WITH

CSR

Designed for future living

Are you looking for a cosy, comfy, energy efficient home with a beautiful rendered finish that won't cost the earth? Look no further. A Hebel Home has everything you're looking for.

CSR Hebel is designing the long-term future of Australian living with environmentally responsible building systems that provide comfort and energy savings plus a modern rendered finish.

Whether you're building your dream home from the ground up or renovating your home - out or up - CSR Hebel systems offer you a high level of design flexibility with significant benefits over alternative building materials:

- Solid masonry feel
- Great thermal performance
- Excellent acoustic properties
- Won't burn
- Not a food source for termites or vermin

CSR Hebel is Australia's only manufacturer of autoclaved, aerated concrete (AAC), an amazingly innovative building material that has been used in Europe for more than 50 years. AAC delivers the benefits of traditional masonry such as strength, fire and pest resistance and with its unique cellular structure, it's much lighter, easier and quicker to install and provides superior acoustic and thermal insulation.

The power is in the panel

The core component of Hebel systems is a 75mm thick, steel mesh reinforced panel which is supplied in various lengths and profiles to suit wall, floor and fence requirements.

The acoustic, thermal and fire resistance properties of Hebel panels along with the strong, yet slim profile makes Hebel a natural choice for your home.



Better for the environment

By choosing Hebel for your project you can feel good in the knowledge that you have chosen a building material that is good for our environment. Good in three ways:

1. The building materials in your home

The manufacture of Hebel AAC uses just one quarter of the raw materials needed for conventional masonry. There are no waste products produced - even the steam generated is recycled! But the manufacture of Hebel is just the beginning.

Hebel has earned the prestigious, internationally recognized 'Good Environmental Choice - Australia' label.



HEB - 2006
Environmentally Innovative Products

The endorsement is designed as a guide to consumers who

want to choose environmentally friendly products. Hebel demonstrates a reduced environmental load of at least 30% in energy use in comparison to like products. To be able to qualify for this endorsement, a product must satisfy stringent requirements and CSR Hebel is proud to have been awarded the right to display the label.

2. Building your home

You'll breathe easy knowing that Hebel is non-toxic and will not emit any gases - another compelling reason for people concerned with building a healthy, environmentally-friendly home.

Additionally, the combination of modular panel sizes which are designed to suit standard building practices and the ease of working with standard power tools means there is very little waste on site during construction. This means less mess and less landfill due to leftover building materials.

3. Living in your home

The thermal efficiency of Hebel systems will reduce your reliance on heating and cooling appliances. The combined effects of running a heater less in winter and fans or air conditioning in summer can have a big impact on your annual energy bills.

Hebel systems for all your needs

Whether you're building your dream home, a shed, deck, fence or retaining wall, Hebel has a system that will suit your project.



Hebel PowerWall™ external wall



Hebel PowerFloor™ flooring



Hebel SoundFence™ fencing



Hebel BRAACE™ retaining wall

PowerWall™

For external walls



Hebel PowerWall is the external cladding system of choice for many award winning Australian designers and architects.

The system consists of Hebel PowerPanels fixed vertically to horizontal battens that are attached to the loadbearing frame. The panels are glued together to provide a perfectly flat and smooth finish - ideal for a beautiful and increasingly popular rendered finish.



Consider the substantial benefits that Hebel PowerWall provides:

- Superior thermal insulation - you'll spend less on heating and cooling and enjoy a more even temperature inside your home
- Non-combustible - provides excellent fire resistance which is ideal for bushfire prone areas
- Greater living area - slimmer external walls compared to brick allows more internal space for the same building footprint
- Solid and strong - steel-reinforced masonry panels for added security and peace of mind



For first floors and suspended ground floors as well as decks and balconies



Hebel PowerFloor is a solid flooring system that provides excellent acoustic and thermal insulation to help make living in your home a more comfortable experience.

PowerFloor panels are glued and screwed to timber or steel framing. It is this composite action that results in greater resistance to bounce and flex making Hebel PowerFloor an excellent, stable base for tile, slate, marble and other hard surface flooring. It is also perfectly suited to carpet, vinyl, timber boards and decorative finishes.



A quiet word about first floors

If you are looking at building a two storey home or a second storey addition and you're concerned about noise, Hebel PowerFloor would be an excellent choice for you.

The unique structure of PowerFloor is particularly resistant to foot fall noise - the most common noise problem in modern, two storey homes.

The low down on suspended ground floors

If you are building on a sloping site, you will more than likely have a suspended floor. The improved thermal efficiency of Hebel PowerFloor can contribute significantly to the energy efficiency rating of your home.

In states that insist on new dwellings satisfying certain measurable criteria, Hebel PowerFloor can actually reduce the reliance on other design changes which may be necessary to comply such as double glazing and reduced window sizes.

Ask your building designer how Hebel PowerFloor can improve your home's energy efficiency.



for boundary fencing



Hebel SoundFence is a cost effective, acoustic barrier fencing system which gives you a high level of design flexibility.

The system is made up of horizontal Hebel panels and steel posts in concrete footings.

The modular nature of the system design and the variety of finish choices available make SoundFence a smart choice for boundary fencing and as an alternative to standard masonry for low front fences.

Hebel SoundFence has some exciting benefits:

- Great acoustic insulation - for added peace and privacy in your outdoor areas
- Solid and durable - steel-reinforced panels combined with a suitable acrylic finishing system provide a strong, long-lasting fence
- Flexible design - can be constructed in a variety of ways and teamed with other materials to achieve a unique look
- Won't burn - essential in bushfire prone areas





for retaining walls



Hebel BRAACE is an environmentally friendly retaining wall system designed for a variety of residential applications

The system consists of galvanised steel posts, mesh support structure and waterproof membrane with horizontal Hebel panels.

The smooth, flat surface can be finished in a number of ways from a simple acrylic paint system to a stylish render look. Hebel BRAACE can also be finished with a variety of stone finishes to become a beautiful design feature.

Look at what Hebel BRAACE can do for your backyard:

- Quick and inexpensive installation - compared with the costly strip footings associated with standard masonry retaining walls
- Better for the environment - contains no chemicals to leech into the ground like some treated timber systems
- Pest resistant - not a food source for termites or vermin
- Long-term durability - rot proof UV resistant impermeable membrane and galvanised steel structure

Thinking of renovating?



The value, appearance and comfort levels of your home can be dramatically improved by using Hebel systems for renovations or additions.



Whether you're simply adding a deck or adding another level to your home, Hebel systems are an ideal choice.

Hebel PowerWall is a relatively straightforward replacement for fibre cement sheeting or weatherboard. If you are extending a brick home, you can achieve an amazing transformation rendering the existing part to match the new.

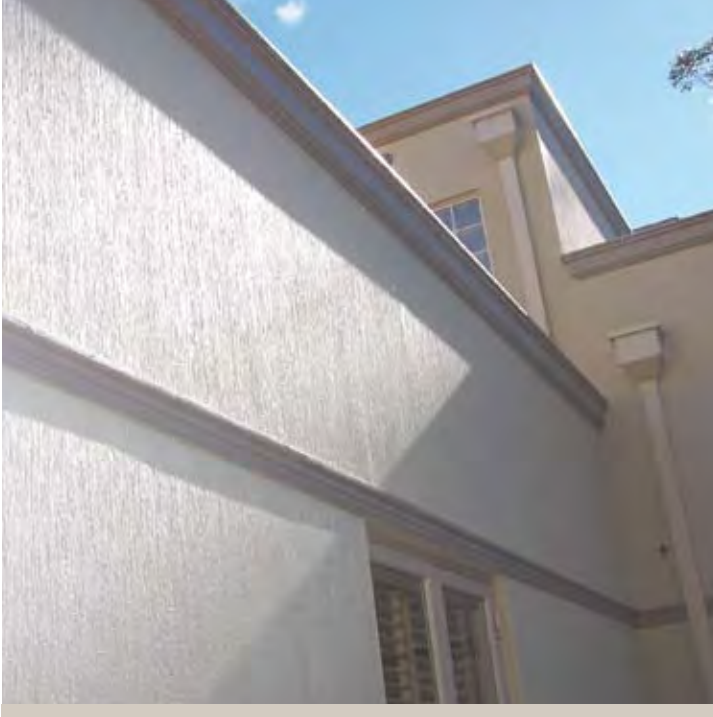
Looking to owner-build?



If you are contemplating managing your own project as an owner-builder, you'll find that Hebel systems are easy to understand and install. In fact, because there are generally fewer trades required, you'll more than likely find it faster and simpler to manage as well.

There are many contractors who specialize in supply, install and coating of Hebel systems. Your local distributor can help you with any questions and point you in the right direction.

The perfect finish



With the huge choice of suitable acrylic texture coating systems and colours available and incorporating the 2 render systems developed by CSR Hebel, you have the ability to create your own unique style for external walls and fencing.

For a full description of what's possible, see the Hebel Render brochure which is available from the CSR Hebel website www.hebelaustralia.com.au

Designing for future living

CSR Hebel is a quality building product, and is backed by CSR Building Products Limited. Further details on engineering and building with Hebel systems are available in the CSR Hebel Design Guides and Technical Manual. To obtain a copy, or for further sales or technical assistance, please visit our website.

CSR Hebel Website:
www.hebelaustralia.com.au

For sales enquiries or further information, please telephone us from anywhere in Australia:

1300 369 448

Hebel

for future living

CSR HEBEL MANUFACTURING PLANT
112 Wisemans Ferry Road
Somersby NSW 2250
Fax (02) 4340 3300

Guarantee

CSR Hebel guarantees the products manufactured by itself and the systems described in CSR Hebel literature for 7 years, subject to the terms and conditions of the CSR Hebel Guarantee which can be inspected on the CSR Hebel website at www.hebelaustralia.com.au. CSR Hebel does not however guarantee the components, products or services, such as installation, supplied by others. CSR recommends that only products, components and systems recommended by it be used.

Health & Safety

Information on any known health risks of our products and how to handle them safely is on their packaging and/or the documentation accompanying them. Additional information is listed in the Material Safety Data Sheet (MSDS). To obtain a copy of a MSDS, telephone 1800 807 668 or download from www.hebelaustralia.com.au. Contractors are required by law to perform their own risk assessments before undertaking work. CSR Hebel has sample Safe Work Method Statements (SWMS) to assist in this. To obtain a sample SWMS, refer also to the above sources.

Available from: